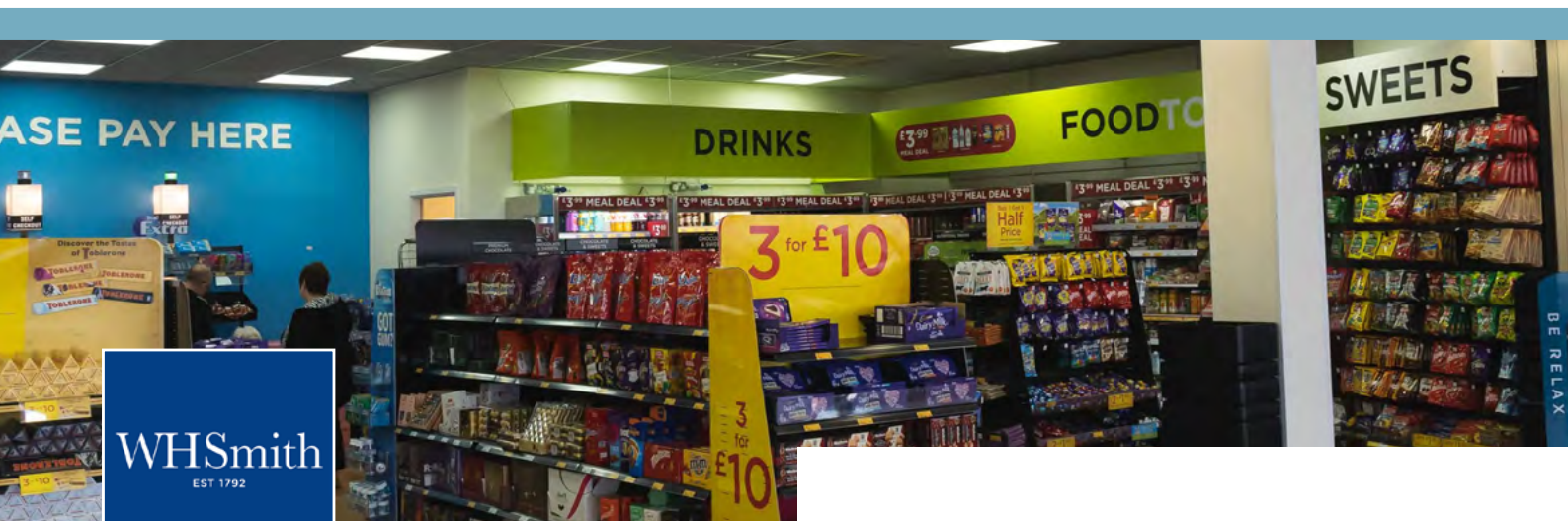


Secure Trust Bank Commercial Finance backs Modella Capital in WH Smith high street deal



Name:

WHSmith

Location:

Swindon

Sector:

Retail

Size:

£50m asset-based lending facility

Rationale:

Modella Capital sought a flexible funding package to enable its acquisition and rebrand of the WH Smith high street stores

How we did it differently:

- Took the time to understand the market position, rebranding and future aspirations of the WH Smith high street stores in depth
- Designed a flexible, cost-effective financing solution aligned with Modella Capital's acquisition goals and scalability plans
- Ensured a smooth handover by partnering effectively with both management and investors, setting the new TG Jones brand up for continued success

The results:

Secure Trust Bank Commercial Finance provided a £50m facility to support Modella Capital's acquisition of the WH Smith high street stores and subsequent rebrand to TG Jones.

Comments:

Joseph Price, Managing Director at Modella Capital, said:

"TG Jones represents exactly the kind of business we look to back, with a strong management team and clear opportunities for transformation and growth. Having worked with STB CF previously, we knew they would be the perfect partner for this transaction, and this latest deal with the team has allowed us to unlock significant working capital, setting TG Jones up for long-term success. We're excited to begin this new chapter with the management team."

Why Modella Capital chose Secure Trust Bank:

- Structured a facility with the flexibility to support our evolving operational demands
- Enabled us to pursue our future expansion goals with confidence
- Took a collaborative approach that made the process smooth and efficient

For more information:

www.securetrustbank.com/commercial-finance